

ACCERSSORI
ACCESORIES
ZUBEHÖR

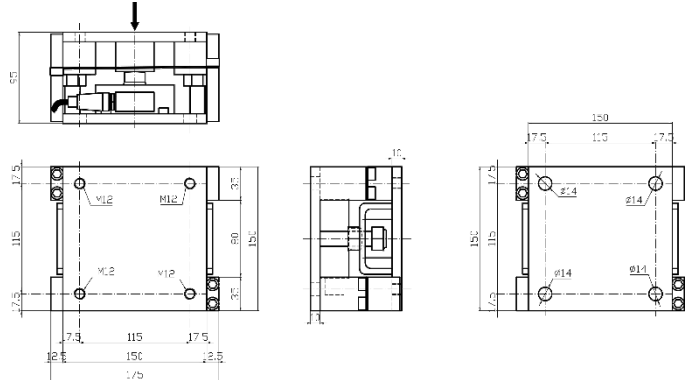
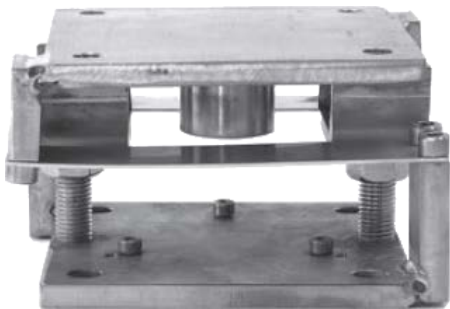
ACME1

Per celle
For cells
Für Zellen

ME da 250 kg a 10 ton
ME from 250 kg to 10 ton
ME von 250 kg bis 10 Tonnen

Materiale
Material
Material

Acciaio inossidabile
Stainless steel
Edelstahl



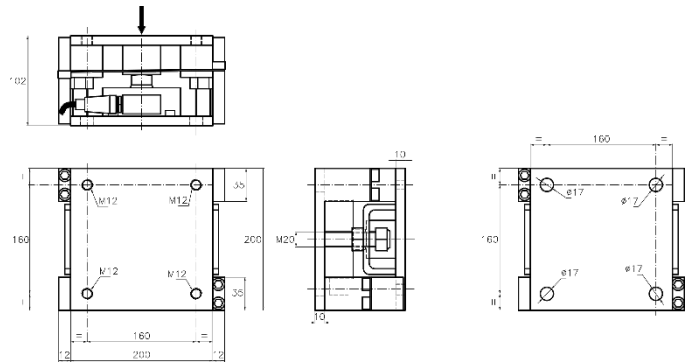
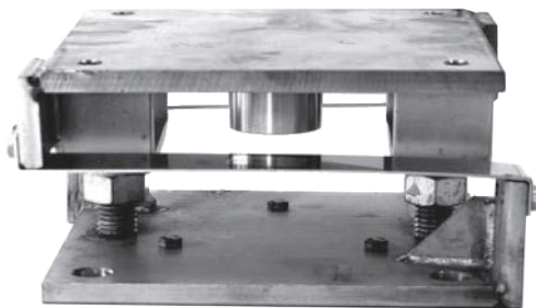
ACME2

Per celle
For cells
Für Zellen

ME da 15 a 25 ton
ME from 15 to 25 ton
ME von 15 bis 25 Tonnen

Materiale
Material
Material

Acciaio inossidabile
Stainless steel
Edelstahl



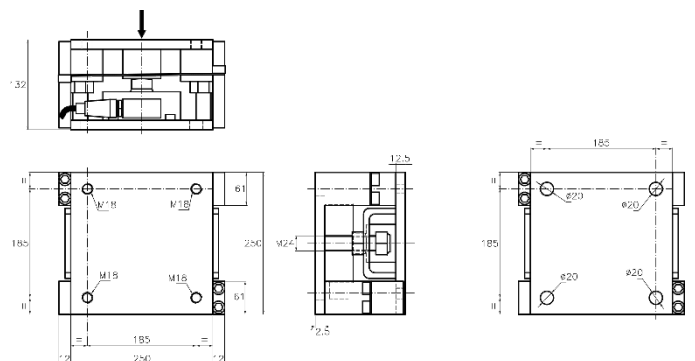
ACME3

Per celle
For cells
Für Zellen

ME da 30 a 35 ton
ME from 30 to 35 ton
ME von 30 bis 35 Tonnen

Materiale
Material
Material

Acciaio inossidabile
Stainless steel
Edelstahl



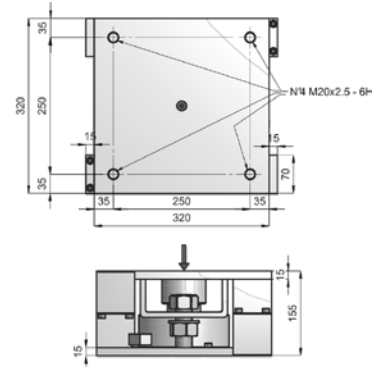
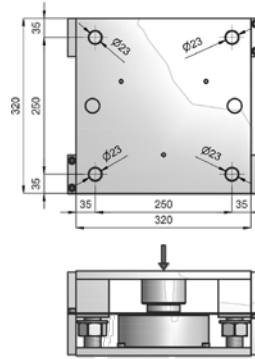
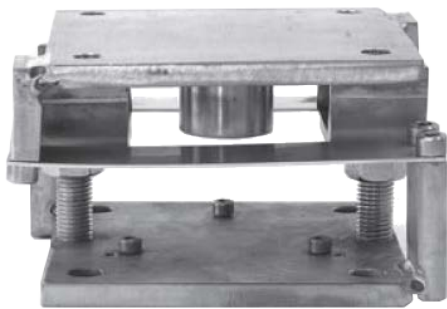
ACCERSSORI
ACCESORIES
ZUBEHÖR
ACME4

Per celle
 For cells
 Für Zellen

ME da 50 a 100 ton
ME from 50 to 100 ton
ME von 50 bis 100 Tonnen

Materiale
 Material
 Material

Acciaio inossidabile
 Stainless steel
 Edelstahl

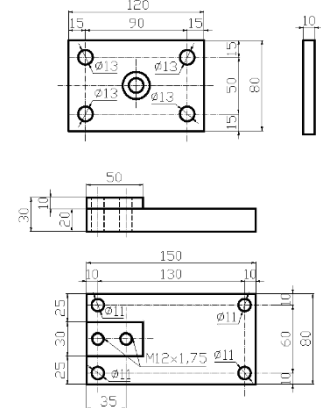
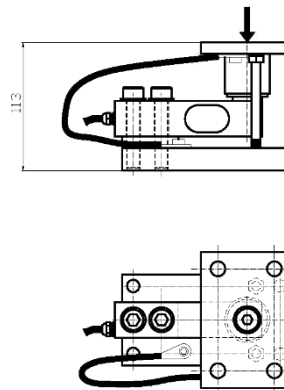
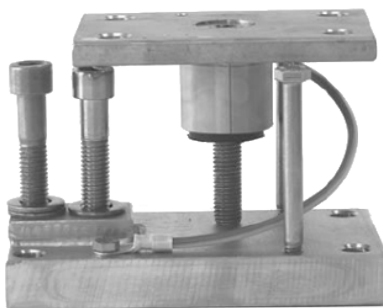

ACTS5

Per celle
 For cells
 Für Zellen

TS2 – TS4 – TS5 – TS5F

Materiale
 Material
 Material

Acciaio inossidabile
 Stainless steel
 Edelstahl

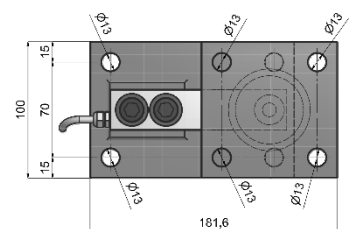
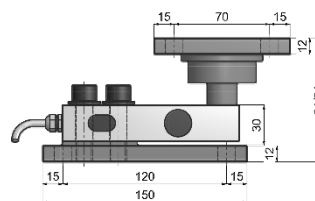
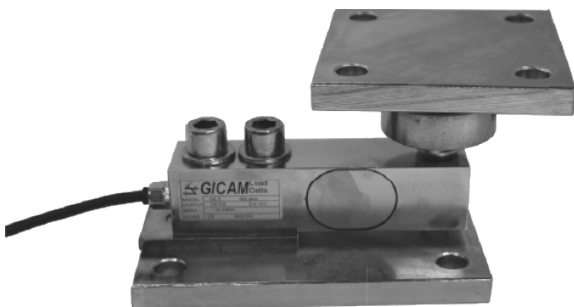

ACTS7

Per celle
 For cells
 Für Zellen

TS2 – TS4 – TS5 – TS5F

Materiale
 Material
 Material

Acciaio inossidabile
 Stainless steel
 Edelstahl



ACCERSSORI
ACCESORIES
ZUBEHÖR

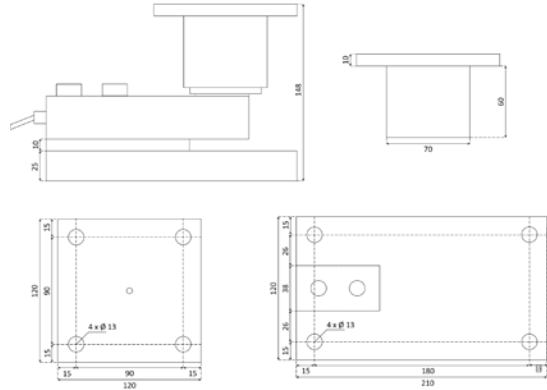
ACTS6

Per celle
For cells
Für Zellen

TS6 – TS22 – TS23

Materiale
Material
Material

Acciaio zincato
Galvanized steel
Verzinkter Stahl



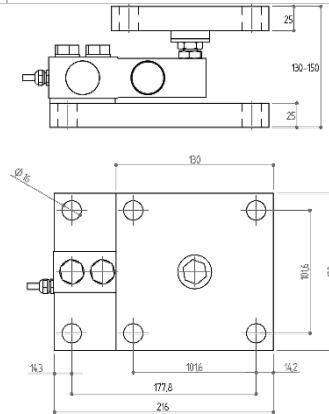
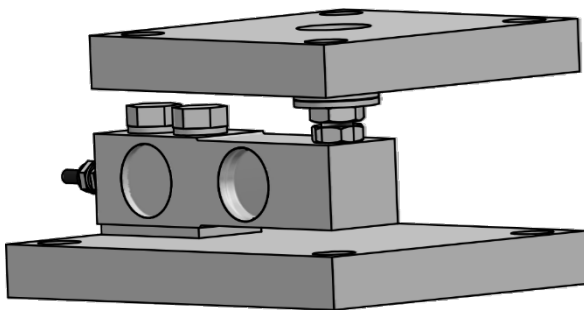
ACTS8

Per celle
For cells
Für Zellen

TS8

Materiale
Material
Material

Acciaio zincato
Galvanized steel
Verzinkter Stahl



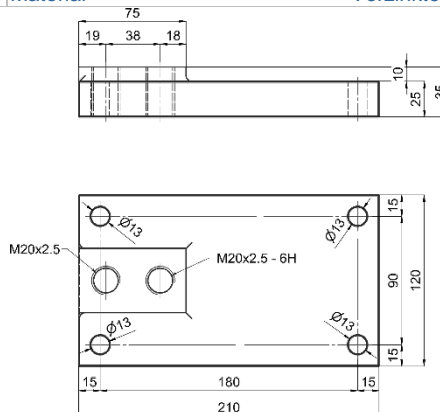
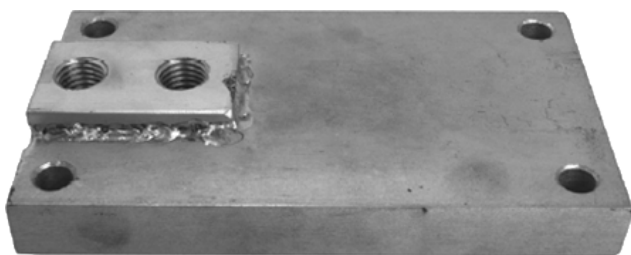
PIASTRA ACTS6

Per celle
For cells
Für Zellen

TS6

Materiale
Material
Material

Acciaio zincato
Galvanized steel
Verzinkter Stahl

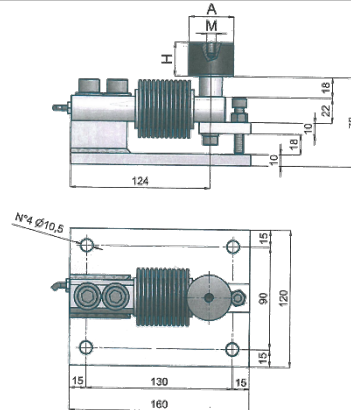
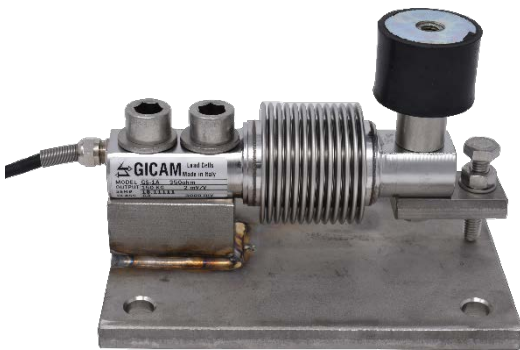


**ACCERSSORI
ACCESSORIES
ZUBEHÖR**
ACGS-1a max. 200 kg

 Per celle
For cells
Für Zellen

GS-1A

 Materiale
Material
Material

 Acciaio inossidabile
Stainless steel
Edelstahl


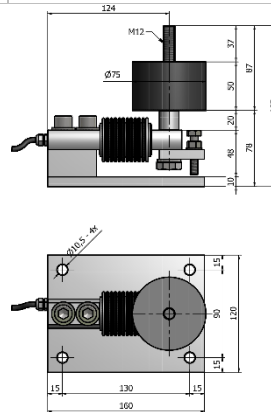
Portata	A	H	M
100 kg	30	30	8x8
150 kg	40	30	8x8
200 kg	50	40	10x10

ACGS-1a max. 300 kg

 Per celle
For cells
Für Zellen

GS-1A

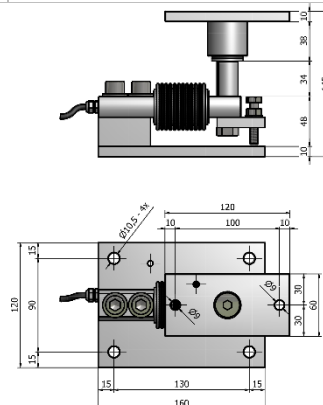
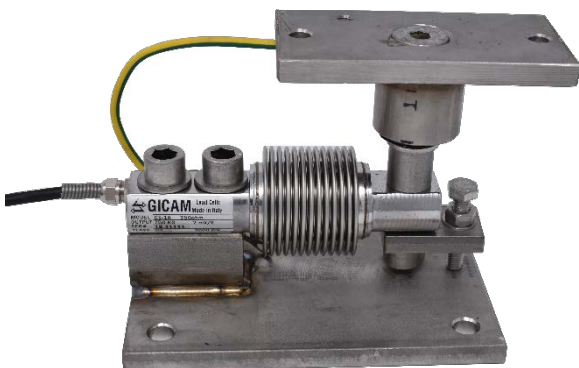
 Materiale
Material
Material

 Acciaio inossidabile
Stainless steel
Edelstahl

ACGS-1a max. 1 t

 Per celle
For cells
Für Zellen

GS-1A

 Materiale
Material
Material

 Acciaio inossidabile
Stainless steel
Edelstahl


ACCERSORI
ACCESORIES
ZUBEHÖR

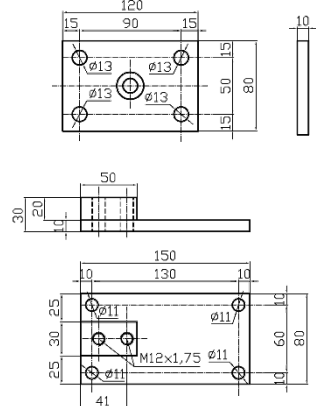
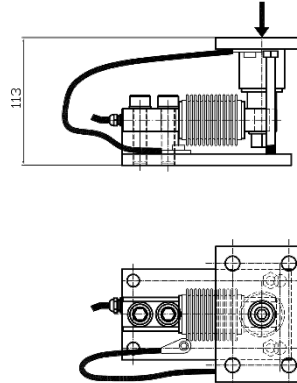
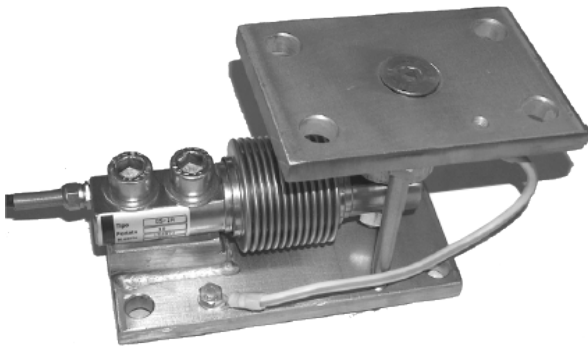
ACGS-1a 1t – 2t

Per celle
For cells
Für Zellen

GS-1A

Materiale
Material
Material

Acciaio inossidabile
Stainless steel
Edelstahl



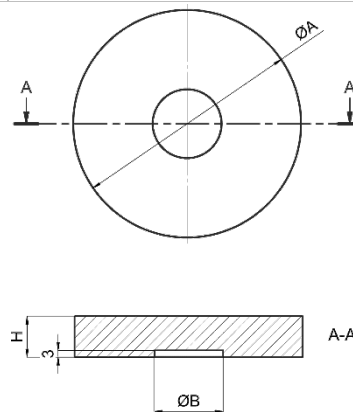
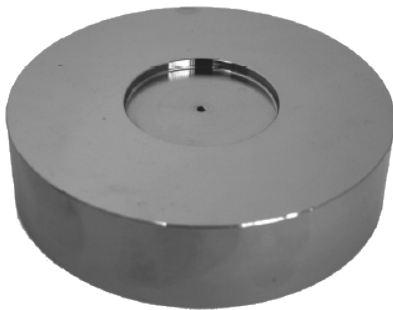
CAPELLO ME

Per celle
For cells
Für Zellen

ME

Materiale
Material
Material

Acciaio inossidabile
Stainless steel
Edelstahl



Portata	A	B	H
10 t	83	27	13
20 t	100	30	18
30 t	100	40	25

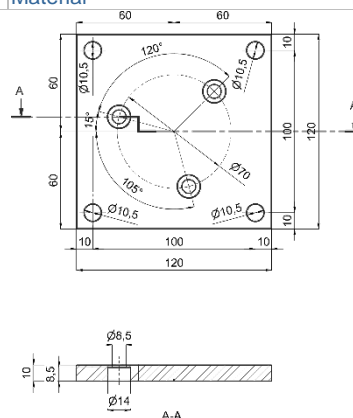
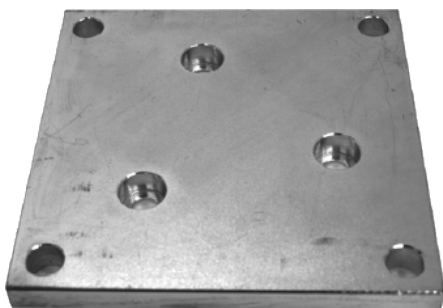
PIASTRA FONDO ME

Per celle
For cells
Für Zellen

ME ≤ 10 T

Materiale
Material
Material

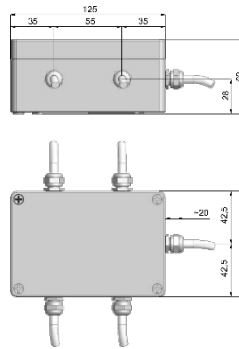
Acciaio inossidabile
Stainless steel
Edelstahl




ACCERSSORI
ACCESSORIES
ZUBEHÖR

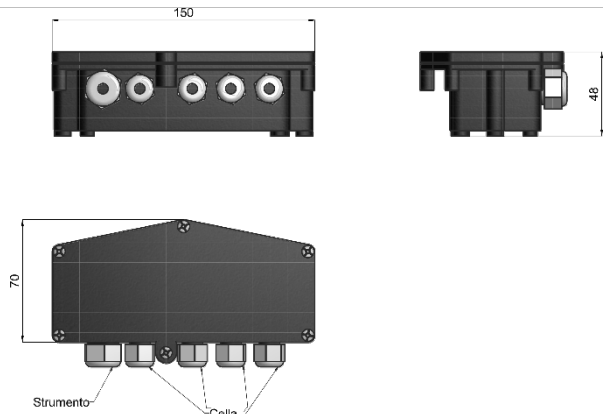
JUNCTION BOX

Materiale Material Material	Alluminio pressofuso / plastica Die-cast aluminum / plastic Druckgegossenes Alu / Kunststoff	Grado di protezione Protection class Schutzklasse	IP 65
Temperatura di funzionamento Operating temperature Betriebstemperatur	- 10 °C / + 40 °C 14 °F / 104 °F	Umidità Humidity Luftfeuchtigkeit	Max. 85% senza condensa Max. 85% non-condensing Max. 85% nicht kondensierend
Temperatura di stoccaggio Storage temperature Lagertemperatur	- 20 °C / + 50 °C -4 °F / 122 °F	Taratura Calibration Kalibrierung	Tramite trimmer multigiro 10 Ω Through 10 Ω multi-turn trimmer Durch 10-Ω-Potentiometer
Connessione Connection Kabelverbindung	Morsettiere a molla doppio cordolo in acciaio inossidabile passo 5,08 collegabili fino a 4 celle Double bead spring terminal blocks in stainless steel, 5.08 pitch, up to 4 cells connectable Doppel-Wulst Federklemmen in Edelstahl, 5,08 Steigung, bis zu 4 Zellen anschließbar		



SG4C

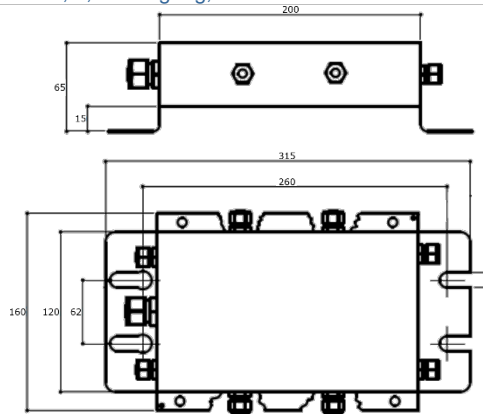
Materiale Material Material	ABS	Grado di protezione Protection class Schutzklasse	IP 68
Temperatura di funzionamento Operating temperature Betriebstemperatur	- 10 °C / + 40 °C 14 °F / 104 °F	Umidità Humidity Luftfeuchtigkeit	Max. 85% senza condensa Max. 85% non-condensing Max. 85% nicht kondensierend
Temperatura di stoccaggio Storage temperature Lagertemperatur	- 20 °C / + 50 °C -4 °F / 122 °F	Taratura Calibration Kalibrierung	Tramite trimmer multigiro 10 Ω Through 10 Ω multi-turn trimmer Durch 10-Ω-Potentiometer
Connessione Connection Kabelverbindung	Morsettiere a molla doppio cordolo in acciaio inossidabile passo 5,08 collegabili fino a 4 celle Double bead spring terminal blocks in stainless steel, 5.08 pitch, up to 4 cells connectable Doppel-Wulst Federklemmen in Edelstahl, 5,08 Steigung, bis zu 4 Zellen anschließbar		
A richiesta con certificazione Upon request con certification Auf Anfrage mit Zertifizierung			



ACCERSSORI
ACCESSORIES
ZUBEHÖR

SG8C

Materiale Material Material	Acciaio inossidabile Stainless steel Edelstahl	Grado di protezione Protection class Schutzklasse	IP 67
Temperatura di funzionamento Operating temperature Betriebstemperatur	- 10 °C / + 40 °C 14 °F / 104 °F	Umidità Humidity Luftfeuchtigkeit	Max. 85% senza condensa Max. 85% non-condensing Max. 85% nicht kondensierend
Temperatura di stoccaggio Storage temperature Lagertemperatur	- 20 °C / + 50 °C -4 °F / 122 °F	Taratura Calibration Kalibrierung	Tramite trimmer multigiro 10 Ω Through 10 Ω multi-turn trimmer Durch 10-Ω-Potentiometer
Connessione Connection Kabelverbindung	Morsettiere a molla doppio cordolo in acciaio inossidabile passo 5,08 collegabili fino a 8 celle Double bead spring terminal blocks in stainless steel, 5.08 pitch, up to 8 cells connectable Doppel-Wulst Federklemmen in Edelstahl, 5,08 Steigung, bis zu 8 Zellen anschließbar		



SG8CL

Materiale Material Material	Alluminio pressofuso Die-cast aluminum Druckgegossenes Alu	Grado di protezione Protection class Schutzklasse	IP 65
Temperatura di funzionamento Operating temperature Betriebstemperatur	- 10 °C / + 40 °C 14 °F / 104 °F	Umidità Humidity Luftfeuchtigkeit	Max. 85% senza condensa Max. 85% non-condensing Max. 85% nicht kondensierend
Temperatura di stoccaggio Storage temperature Lagertemperatur	- 20 °C / + 50 °C -4 °F / 122 °F	Taratura Calibration Kalibrierung	Tramite trimmer multigiro 10 Ω Through 10 Ω multi-turn trimmer Durch 10-Ω-Potentiometer
Connessione Connection Kabelverbindung	Morsettiere a molla doppio cordolo in acciaio inossidabile passo 5,08 collegabili fino a 8 celle Double bead spring terminal blocks in stainless steel, 5.08 pitch, up to 8 cells connectable Doppel-Wulst Federklemmen in Edelstahl, 5,08 Steigung, bis zu 8 Zellen anschließbar		

